

An Advancing Beef Leaders Project 2025

UNSPOKEN WISDOM FROM THE BUSH

A photograph of a herd of cattle in a dry, open field at sunset. The sky is a mix of orange and grey, and the ground is covered in dry grass and shrubs. In the foreground, a white cow stands prominently, looking towards the camera. Behind it, several other cows are visible, some brown and some white. The overall scene is peaceful and rural.

**SO IT'S YOUR
FIRST RODEO?**

**A ROOKIE'S GUIDE TO SURVIVING AND THRIVING
IN YOUR FIRST YEAR IN THE BEEF INDUSTRY**

ARE YOU READY?

Do you know what's expected in your role?

How to handle yourself in a new work environment?

The beef industry is hugely diverse and rewarding,
and career opportunities are everywhere.

It's also tough and challenging.

Let's make the starting out experience for both
employers and employees more smooth through
words of wisdom and unspoken truths.

WHO ARE WE?

We are participants of the Advancing Beef Leaders (ABL) program in 2025. This is our group project, and we are passionate about helping young people get a START and STAY in the Beef Industry.

ABL Foundation
Advancing Beef Leaders

LET'S GET STARTED

1. PROPER PRIOR PREPARATION

What do I pack?

2. SURVIVING & THRIVING

It's not just saddles and sunsets!

3. HELP!

Who you gonna call?

4. WHERE TO FROM HERE?

Educating yourself!



PROPER PRIOR PREPARATION

Prevents P☆ss Poor Performance

Check with your employer for a
list of gear that you will need

Your #1 investment
to hit the
ground running!

WATER

Bring a YOWY (big water bottle)
for big days in the yards and a
smaller one for your saddle bag.
Get yours engraved so you're not
sharing from the same trough.



ALL THE RIGHT GEAR IS A GOOD IDEA!

- ✓ **SWAG**—simple roll out style and a mozzie net won't go astray.
- ✓ **RADIO HOLSTERS**—make sure it's comfortable and keep your aerial to the outside so it doesn't poke you in the face. Pockets on your holster are great for extras eg. phone and lippy.
- ✓ **UHF RADIO**—ask your employer for recommended brand and size.
- ✓ **WATER BOTTLE HOLDERS** that can go on saddle and bikes—there are some great leather and pvc mesh options with tie straps.
- ✓ **GEAR BAG**—Vinyl is dust and waterproof.
- ✓ Get yourself a pair of **CROCS!**
- ✓ Sunscreen **EVERYDAY.**
- ✓ **HYDROLYTES**—sachets or a jar.



YES... BUY THE SECOND PAIR OF BOOTS



BOOTS just ain't boots! Rubber-soled boots are comfortable, shock resistant and will save your soul. Refer to the table at your own discretion.

Keep your boots oiled with saddle oil to keep them waterproofed!



Riding Horses



Riding Motorbikes



Yard Work



Boot Scootin'



**SHIRTS: LIGHTWEIGHT FOR SUMMER
AND HEAVY DRILL FOR WINTER. LONG
SLEEVES AND BIG POCKETS. BRING A
BRIGHT VERSION FOR FUN DAYS!**

**MAKE SURE YOU HAVE A WIDE-BRIMMED
HAT THAT WILL STAY ON YOUR HEAD!**

**BE SURE TO BUY LONGER
JEANS FOR RIDING HORSES**



**LADIES! NECK SCARVES AND
SPF50+ SUN PROTECTION
GLOVES ARE A GAME CHANGER!**

**POLARISED SUNNIES AND STRAPS TO
PROTECT YOUR EYES FROM UV AND DUST**

**POCKET KNIFE / LEATHERMAN
AND BELT POUCH**



SURVIVING & THRIVING



**IT'S NOT ALL
SADDLES & SUNSETS**

IN THE Paddock & AROUND VEHICLES

ALWAYS check your fuel (gauges are often broken), especially sub tanks!



Check your vehicle—Fuel, air, water, oil.

Wear a helmet! Your future self and family will thank you.

Make sure you **charge your UHF radio** & test your channel.

Always **check how the gate is chained** before you open it (and do it up the same way).

If you're lost in a paddock **stay on a fence or road**—stick to landmarks.

AROUND LIVESTOCK

1 RULE—NEVER, EVER swing gates shut behind stock in the yards—a cow can kick a gate faster than the speed of sound and you'll literally get your head smashed in!

BALING TWINE Always pick up and bin or burn safely.

If your horse bolts remember your brakes are the **one-rein stop!**

Always **check your girth & saddle blanket for prickles!**
Nobody needs a prickle in their jocks.

If you say you can ride, they'll give you the rankest pony in the camp!

Horse maintenance before and after every ride.

Spray your hat with aeroguard for flies before you leave for the day.

COMMUNICATION

ATTITUDE is everything!

Listen carefully... with your ears open!

Make sure you always **understand your instructions** before walking away—repeat back to confirm you understood.

If you say you'll do it, then **you better bloody well do it!**

Honesty is the best policy... Mistakes happen. Learn from them and move on!

Take critical feedback with utmost respect.

Don't be afraid to ask for advice.

Find yourself a mentor and **ask questions.**

If conversations get heated, **take a deep breath and pause before responding.**



People are the driving force behind agriculture. Inspire AG assists the industry in growing people-first farming businesses with a focus on **safety, productivity and fostering respectful cultures.**

Contact Inspire AG at www.inspire-ag.com.au/



STATION ETIQUETTE

Be punctual and be reliable.

A firm handshake and eye contact is the only way in the bush! **First impressions count.**



Take your hat off when you walk inside.

Hygiene is very important—wash your face & hands EVERY morning before breakfast, at smoko and lunch before you sit in the camp!

Don't take the last piece of cake (or steak, quiche, beer) without offering your crew first.



Don't stand around waiting—there's always something to clean.

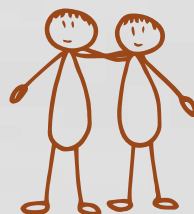
Wait for the dust to settle before opening car doors.

Cut your lunch before breakfast.

Always say thank you to the Cook and clean up after yourself!

Got the weekend off? Make sure you **maintain the camp culture** when you're having a good time.

Get up before everyone else.



SOCIAL MEDIA—Make memories not content!

Be mindful of how your posts might be perceived by those outside the industry. Always check your post aligns with your employer's policy and ethics.



WANT TO PREVENT BEING 'BURNED OUT'?

BE PREPARED

Sign up to any **first aid training** that is available.

Carry an **emergency beacon** in your saddle bag or on your belt.

Have bandages everywhere—in your glove box, in your lunch box and on top of your fridge.

Snake bites are a real thing so get familiar with the protocol and take it seriously.

Get a **Q-fever vaccination** as soon as possible.

Call Ergon to report faults on 13 22 96

Have the Fire North website handy www.firenorth.org.au/nafi3

Download the Emergency Plus App

ARE YOU OK, MATE?

**Mateship
Manual**

TIACS
Free mental
health support

**Sober
in the
Country**



WHO WILL YOU CALL IN AN EMERGENCY?



Station GPS Coordinates:

RFDS: 1800 DRS FLY (1800 377 359)

Poison Hotline: 13 11 26

Local Fire Brigade Contact:

Neighbour Contacts:

Name, Phone Number & Radio Channel

.....

.....

.....

.....

.....

.....

.....



WHERE TO FROM HERE?



KEEP LEARNING NEW TRICKS

For your first year, find an employer that has an induction week or offers professional development throughout the year

Tools to self-improve

Low stress stock handling school

Horse breaking-in school

Horse shoeing school

Preg-testing school

Keep yourself up-to-date with industry courses

www.inspire-ag.com.au

www.agcareerstart.com.au

www.youngaussiefarmers.com

www.futurebeef.com.au/events

<https://agriculturejobsauswide.com/events>

TOP TIP Find yourself a mentor

Facebook: @thekelpieconcept

Website: thekelpieconcept.com

Become involved in your local community!

Volunteer for a local committee such as the rural fire brigade, campdraft or races



CAREER PATHWAYS

Endless opportunities...

Abattoir Worker

Agri Finance

Business Analyst

Contractor: Fencing, Mustering

Data Analyst

Department Primary Industries

Drone Technology

Extension Officer

Farrier

Helicopter Pilot

Horse or Weaner Educator

Industry Course Instructor

Livestock Agent and Auctioneer

Natural Resource Management

Nutritionist

Pasture Agronomist

Product Rep

Property Mapping

Research and Development

Rural Financial Counsellor

Soil Conservationist

Station Manager

Truck Driver

Veterinarian

Weed & Vegetation
Management



SHOOT FOR THE STARS

AND APPLY FOR THESE RENOWNED OPPORTUNITIES

Advancing Beef Leaders Program

Beef Supply Chain Traineeship with Signature Beef

CHRRUP LEADAg Program

Marcus Oldham College

Nuffield Scholarship

Zanda McDonald Award



DOWNLOAD YOUR FREE COPY OF THIS BOOK

Share with your employees and friends

Kindly hosted at:
www.youngaussiefarmers.com



INDUSTRY PARTNERS

Nutrien

Mareeba - Tolga - Cloncurry - Richmond



YOWY



Proudly created by the ABL Northern Cohort 24/25

Aaron Gallagher – Darcy McKenzie – Ele Avery – John Dunne – Rene Ramsay – Sophie Wilkins

Published May 2025

© The ABL Foundation 2025, All Rights Reserved.

The material in this booklet is provided for general information only, and on the understanding The ABL Foundation is not providing advice on particular jobs, properties or employers. Readers seeking employment in the Australian beef industry should conduct their own research, and consult with appropriate independent professionals and prospective employers before taking any action or making any decision.

